

2022 First Extraordinary Session

HOUSE BILL NO. 17

BY REPRESENTATIVE WILFORD CARTER

REAPPORTIONMENT/JUDGES: Provides for nine election districts for the election of justices to the supreme court (Item #6)

1 AN ACT

2 To enact R.S. 13:101.2 and 101.3 and to repeal R.S. 13:101, 101.1, and 312.4, relative to the
3 supreme court; to provide relative to redistricting supreme court justice districts; to
4 provide for the filling of vacancies; to eliminate statutory provisions for a temporary
5 additional judgeship for the Court of Appeal for the Fourth Circuit and such judge's
6 appointment to the supreme court; and to provide for related matters.

7 Be it enacted by the Legislature of Louisiana:

8 Section 1. R.S. 13:101.2 and 101.3 are hereby enacted to read as follows:

9 §101.2. Supreme court districts; justices

10 The state shall be divided into nine supreme court districts. The supreme
11 court shall be composed of one justice elected from each of the nine districts as set
12 forth below:

- 13 (1) District 1 is composed of Precincts 1, 2, 3, 4, 5, 7, 8, 9, 10, 11, 12, 13, 14,
- 14 15, 16, 17, 18, 19, 20, 21, 22, 23, 24, 25, 26, 27, 28, 29, 30, 31, 32, 33, 34, 35, 36, 37,
- 15 38, 39, 40, 41, 42, 43, 44, 45, 46, 51, 52, 53, 54, 55, 56, 57, 58, 59, 60, 61, 62, 63, 64,
- 16 65, 66, 67, 68, 69, 70, 71, 72, 73, 74, 75, 76, 77, 78, 79, 80, 81, 82, 83, 84, 85, 86, 87,
- 17 88, 89, 90, 91, 92, 93, 94, 95, 96, 97, 98, 99, 100, 101, 102, 103, 105, 106, 118, 119,
- 18 120, 121, 122, 123, 124, 125A, 125B, 126, 127, 128, 1-H, 2-H, 3-H, 4-H, 5-H, 6-H,
- 19 7-H, 8-H, 9-H, 1-K, 2-K, 3-K, 4-K, 5-K, 6-KA, 6-KB, 7-KA, 7-KB, 8-K, 9-K, 10-K,
- 20 11-K, 12-K, 13-KA, 14-K, 15-K, 16-K, 17-K, 18-K, 19-K, 20-K, 25-K, 27-K, 28-K,

1 34-K, and 35-K of Jefferson Parish; Precincts 4-9, 4-11, 4-14, 4-15, 4-17, 4-17A,
2 4-18, 4-20, 4-21, 4-22, 4-23, 5-12, 5-13, 5-15, 5-16, 5-17, 5-18, 7-41, 7-42, 17-17,
3 17-18, 17-18A, 17-19, and 17-20 of Orleans Parish; and St. Tammany Parish.

4 (2) District 2 is composed of Bienville Parish; Precincts 1-1, 1-2, 1-3, 1-3A,
5 1-3B, 1-4, 1-5, 2-1, 2-2, 2-3, 2-3A, 2-4, 2-5A, 2-7, 2-9, 2-10, 2-11, 2-11A, 2-12A,
6 2-12B, 2-12C, 2-13, 2-14, 2-15, 2-16, 2-17A, 2-17B, 2-18B, 2-18C, 2-18D, 2-18E,
7 2-18F, 2-18G, 2-19, 2-20, 2-21A, 2-21B, 2-21C, 2-21D, 2-22A, 2-22B, 2-22C, 2-23,
8 3-1, 3-2, 3-3, 3-4, 4-1A, 4-2, 4-3A, 4-3B, 4-3C, 4-3D, 4-4A, 4-4B, 4-5A, 4-6A, 4-6B,
9 4-7A, 4-7B, 4-8A, 4-8B, 4-8C, 4-8D, 4-8E, 4-8G, 4-9, 4-10, 4-11A, 4-11B, and
10 4-11C of Bossier Parish; Precincts 8, 9, 10, 11, 12, 13, 14, 15, 16, 17, 20, 21, 22, 24,
11 26, 27, 48, 49, 56, 68, 72, 75, 76, 77, 82, 92, 93, 95, 97, 98, 101, 102, 103, 104, 107,
12 108, 109, 110, 112, 113, 115, 123, 125, 126, 127, 128, 129, 133, 134, 135, 136A,
13 136B, 137, 138, 139, 140, 142, 143, 144, 145, 146, 149, 151, 154, 155, 156, 157,
14 158, 160, 161, 165, and 166 of Caddo Parish; Caldwell Parish; Claiborne Parish;
15 Precincts 21 and 22 of DeSoto Parish; Precincts 3, 4, 5, 5A, 5B, 15, and 17 of East
16 Carroll Parish; Franklin Parish; Jackson Parish; Lincoln Parish; Morehouse Parish;
17 Precincts 1, 1A, 2, 4, 6, 7, 25, 26, 32, 33, 36, 37, 38, 39, 40, 41, 42, 43, 44, 44A, 45,
18 46, 47, 48, 49, 50, 51, 51A, 52, 52A, 53, 54, 55, 56, 56A, 57, 58, 61, 64, 71, 75, 76,
19 77, and 78 of Ouachita Parish; Union Parish; Webster Parish; and West Carroll
20 Parish.

21 (3) District 3 is composed of Acadia Parish; Calcasieu Parish; Cameron
22 Parish; Jefferson Davis Parish; and Precincts 1, 2, 3, 4, 5, 6, 7, 8, 9, 10, 11, 12, 13,
23 14, 15, 16, 17, 18, 19, 20, 21, 22, 23, 24, 25, 26, 27, 28, 29, 30, 31, 32, 33, 34, 35, 36,
24 37, 38, 39, 40, 41, 42, 43, 44, 45, 46, 47, 48, 49, 51, 52, 53, 54, 55, 56, 57, 58, 59, 60,
25 61, 62, 63, 64, 65, 66, 67, 68, 69, 70, 71, 72, 73, 74, 75, 76, 77, 78, 79, 80, 81, 82, 83,
26 84, 85, 86, 87, 88, 89, 90, 91, 92, 93, 94, 95, 96, 97, 98, 104, 105, 106, 107, 108, 109,
27 111, 112, 113, 114, 115, 117, 118, 119, 120, 121, 122, 123, 124, 125, 126, 127, and
28 128 of Lafayette Parish.

1 (4) District 4 is composed of Precincts 1-2, 2-1, 2-2, 2-2A, 2-2B, 2-2C, 2-2D,
2 2-2F, 2-3A, 2-4, 2-4A, 2-7, 2-8, 3-1, 3-1B, 3-3, and 5-1A of Avoyelles Parish;
3 Precincts 2-6 and 2-8 of Bossier Parish; Precincts 1, 2, 3, 4, 5A, 5B, 6, 7, 23, 25, 28,
4 29, 30, 31, 32, 34, 35, 36, 37, 38, 39, 40, 41, 43, 44, 45, 46, 47, 50, 51, 52, 53, 54, 55,
5 57, 58, 59, 60, 61, 62, 63, 64, 65, 66, 67, 69, 70, 71, 73, 74, 78, 79, 80, 81, 83, 84, 85,
6 86, 87, 88, 89, 90, 91, 94, 99, 100, 105, 106, 111, 114, 122, 132, 162, and 163 of
7 Caddo Parish; Catahoula Parish; Precincts 1-1, 1-2, 1-3, 1-4, 2-1, 3-1, 3-2, 3-3, 3-4,
8 4-1, 4-2, 4-3, 4-4, 5-1, 5-2, 5-2B, 5-3, 5-4, and 5-6 of Concordia Parish; Precincts 1,
9 4, 5, 6, 9, 10, 11, 16, 23, 26, 28, 30, 31, 32, 33, 34, 35, 37, 38, 42, 44, 46, 48, 49, 51,
10 53, 55, 56, 59, 60, and 63 of DeSoto Parish; Precincts 1, 6, 7, 9, 10, 13, 14, 16, 18,
11 and 19 of East Carroll Parish; Grant Parish; LaSalle Parish; Madison Parish;
12 Natchitoches Parish; Precincts 3, 5, 8, 9, 9A, 10, 11, 12, 13, 14, 15, 16, 17, 18, 19,
13 20, 21, 22, 23, 24, 27, 27A, 28, 29, 30, 31, 34, 35, 59, 60, 62, 63, 65, 65A, 66, 67, 68,
14 69, 70, 72, 73, 74, and 79 of Ouachita Parish; Precincts C1, C2, C3, C4, C5, C6, C7,
15 C8, C9, C10, C11-A, C11-B, C13, C14, C15, C17, C18, C19, C20, C21, C24, C25,
16 C26, C27, C28, C38-A, C38-B, C39, C40, N1, N2, N3, N4, N5, N6, N8, N20, N21,
17 S1, S2, S4, S5, S6A, S6B, S8, S9, and S15 of Rapides Parish; Red River Parish;
18 Richland Parish; Precincts 9-1, 9-2, and 9-3 of Sabine Parish; Tensas Parish; and
19 Winn Parish.

20 (5) District 5 is composed of Allen Parish; Precincts 1-1, 1-3, 2-5, 2-5E, 4-1,
21 4-2, 4-2A, 5-1, 6-1A, 6-2, 6-2A, 7-1, 7-3, 7-3B, 8-1, 8-2A, 8-2B, 8-3, 8-3A, 9-1A,
22 9-2, 9-2A, 9-3, 9-4, 9-4B, 9-5B, 10-2, 10-2A, 10-3A, 10-4, 11-1, and 11-2A of
23 Avoyelles Parish; Beauregard Parish; Precinct 5-5 of Concordia Parish; Precincts
24 2-6, 2-7, 2-8, 2-33, 3-1, 3-2, 3-6, 3-9, 3-14, 3-25, 3-26, 3-30, 3-37, 3-46, 3-58, and
25 3-61 of East Baton Rouge Parish; East Feliciana Parish; Evangeline Parish; Pointe
26 Coupee Parish; Precincts C22, C23, C30, C31, C32, C33, C34, C35, C36, C37-A,
27 C37-B, C41, C42, N7, N9, N10, N11, N12, N13-A, N13-B, N14-A, N14-B, N15,
28 N16, N17, N18-A, N18-B, N19, N22, N23, N24, N25, N26, N27, N28, N29, S7, S10,
29 S11, S13, S14, S16, S17, S18, S19, S20, S21, S22, S23, S24, S25, S26, S27, S28,

1 and S29 of Rapides Parish; Precincts 1-1, 1-2, 1-3, 2-1, 2-2, 2-2A, 2-3, 2-4, 2-4A,
 2 2-5, 2-6, 2-6A, 3-2, 3-4, 3-6, 3-6A, 3-7, 3-7B, 3-7X, 4-1, 5-3, 5-5, 5-8, 5-8A, 6-2,
 3 6-3, 6-4, 6-4A, 6-4B, 7-1, 7-2, 7-3, 7-4, 7-5, 8-1, 8-1A, and 8-2 of Sabine Parish;
 4 St. Helena Parish; St. Landry Parish; Precincts 1, 2, 6, 11, 15, 16, 17, 18, 26, 27, 28,
 5 101, 102, 104, 104A, 105, 106, 106A, 107, 108, 109, 110, 111A, 112, 114, 115B,
 6 116, 117, 118, and 119 of Tangipahoa Parish; Vernon Parish; Washington Parish;
 7 and West Feliciana Parish.

8 (6) District 6 is composed of Precincts 2-1, 2-2, 2-3, 2-4, 2-5, 3-1, 3-2, 7-3,
 9 8-1, and 9-1 of Assumption Parish; Iberia Parish; Precincts 5, 25, 26, and 27 of
 10 Iberville Parish; Precincts 198, 199, 246, 247, 248, 1-GI, and 1-L of Jefferson Parish;
 11 Precincts 99, 100, 101, 102, 103, 110, and 116 of Lafayette Parish; Lafourche Parish;
 12 Plaquemines Parish; St. Bernard Parish; Precincts 2-5, 4-1, 4-2, and 4-3 of
 13 St. Charles Parish; Precincts 17, 18, and 19 of St. James Parish; Precinct 1-1 of
 14 St. John the Baptist Parish; St. Martin Parish; St. Mary Parish; Terrebonne Parish;
 15 and Vermilion Parish.

16 (7) District 7 is composed of Precincts 129, 130, 131, 132, 133, 134, 136,
 17 138, 170, 171, 172, 173, 174, 175, 176, 177, 178, 179A, 179B, 180, 181, 182, 183,
 18 184, 185A, 185B, 189, 190, 191, 192, 193A, 193B, 194A, 194B, 195, 196, 197A,
 19 197B, 200, 202, 203, 204, 205, 210, 211, 212, 213A, 213B, 213C, 214A, 214B, 215,
 20 216A, 216B, 216C, 217, 225, 226, 227, 228, 229, 230, 231, 232A, 232B, 234, 235,
 21 236, 237, 238A, 238B, 1-G, 2-G, 3-G, 4-G, 5-G, 6-G, 7-G, 8-G, 9-G, 10-G, 11-G,
 22 12-G, 13-G, 1-W, 2-W, 3-W, 4-W, 5-W, 6-W, and 7-W of Jefferson Parish and
 23 Precincts 1-1, 1-2, 1-5, 1-6, 2-1, 2-2, 2-4, 2-6, 2-7, 3-1, 3-8, 3-9, 3-12, 3-14, 3-15,
 24 3-18, 3-19, 3-20, 4-2, 4-3, 4-5, 4-6, 4-7, 4-8, 5-1, 5-2, 5-3, 5-5, 5-7, 5-8, 5-9, 5-10,
 25 5-11, 6-1, 6-2, 6-4, 6-6, 6-7, 6-8, 6-9, 7-1, 7-2, 7-4, 7-5, 7-6, 7-7, 7-8, 7-9A, 7-10,
 26 7-11, 7-12, 7-13, 7-14, 7-15, 7-16, 7-17, 7-18, 7-19, 7-20, 7-21, 7-23, 7-24, 7-25,
 27 7-25A, 7-26, 7-27, 7-27B, 7-28, 7-28A, 7-29, 7-30, 7-32, 7-33, 7-35, 7-37, 7-37A,
 28 7-40, 8-1, 8-2, 8-4, 8-6, 8-7, 8-8, 8-9, 8-12, 8-13, 8-14, 8-15, 8-19, 8-20, 8-21, 8-22,
 29 8-23, 8-24, 8-25, 8-26, 8-27, 8-28, 8-30, 9-1, 9-3, 9-4, 9-5, 9-6, 9-7, 9-8, 9-9, 9-10,

1 9-11, 9-12, 9-13, 9-14, 9-15, 9-16, 9-17, 9-19, 9-21, 9-23, 9-25, 9-26, 9-28, 9-28C,
2 9-29, 9-30, 9-30A, 9-31, 9-31A, 9-31B, 9-31D, 9-32, 9-33, 9-34A, 9-35, 9-35A,
3 9-36, 9-36B, 9-37, 9-38, 9-38A, 9-39, 9-39B, 9-40, 9-40A, 9-40C, 9-41, 9-41A,
4 9-41B, 9-41C, 9-41D, 9-42, 9-42C, 9-43A, 9-43B, 9-43C, 9-43E, 9-43F, 9-43G,
5 9-43H, 9-43I, 9-43J, 9-43K, 9-43L, 9-43M, 9-43N, 9-44, 9-44A, 9-44B, 9-44D,
6 9-44E, 9-44F, 9-44G, 9-44I, 9-44J, 9-44L, 9-44M, 9-44N, 9-44O, 9-44P, 9-44Q,
7 9-45, 9-45A, 10-3, 10-6, 10-7, 10-8, 10-9, 10-11, 10-12, 10-13, 10-14, 11-2, 11-3,
8 11-4, 11-5, 11-8, 11-9, 11-10, 11-11, 11-12, 11-13, 11-14, 11-17, 12-1, 12-2, 12-3,
9 12-4, 12-5, 12-6, 12-7, 12-8, 12-9, 12-10, 12-11, 12-12, 12-13, 12-14, 12-16, 12-17,
10 12-19, 13-1, 13-2, 13-3, 13-4, 13-5, 13-6, 13-7, 13-8, 13-9, 13-10, 13-11, 13-12,
11 13-13, 13-14, 13-15, 13-16, 14-1, 14-2, 14-3, 14-4, 14-5, 14-6, 14-7, 14-8, 14-9,
12 14-10, 14-11, 14-12, 14-13A, 14-14, 14-15, 14-16, 14-17, 14-18A, 14-19, 14-20,
13 14-21, 14-23, 14-24A, 14-25, 14-26, 15-1, 15-2, 15-3, 15-5, 15-6, 15-8, 15-9, 15-10,
14 15-11, 15-12, 15-12A, 15-13, 15-13A, 15-13B, 15-14, 15-14A, 15-14B, 15-14C,
15 15-14D, 15-14E, 15-14F, 15-14G, 15-15, 15-15A, 15-15B, 15-16, 15-17, 15-17A,
16 15-17B, 15-18, 15-18A, 15-18B, 15-18C, 15-18D, 15-18E, 15-18F, 15-19, 15-19A,
17 15-19B, 15-19C, 16-1, 16-1A, 16-2, 16-3, 16-4, 16-5, 16-6, 16-7, 16-8, 16-9, 17-1,
18 17-2, 17-3, 17-4, 17-5, 17-6, 17-7, 17-8, 17-9, 17-10, 17-11, 17-12, 17-13, 17-13A,
19 17-14, 17-15, and 17-16 of Orleans Parish.

20 (8) District 8 is composed of Precincts 1-1, 1-2, 4-1, 4-2, 4-3, 5-1, 5-2, 5-3,
21 5-5, 6-1, 6-2, 6-3, 7-1, and 7-2 of Assumption Parish; Precincts 1-1, 1-2, 1-3, 1-4,
22 1-5, 1-6, 1-7, 1-8, 1-10, 1-11, 1-12, 1-13, 1-14, 1-15, 1-16, 1-17, 1-18, 1-19, 1-20,
23 1-21, 1-22, 1-23, 1-24, 1-25, 1-26, 1-27, 1-28, 1-29, 1-30, 1-31, 1-32, 1-36, 1-37,
24 1-38, 1-39, 1-40, 1-41, 1-42, 1-43, 1-44, 1-45, 1-46, 1-47, 1-48, 1-50, 1-51, 1-54,
25 1-56, 1-57, 1-58, 1-59, 1-61, 1-62, 1-63, 1-64, 1-65, 1-66, 1-67, 1-68, 1-69, 1-70,
26 1-73, 1-75, 1-76, 1-77, 1-78, 1-82, 1-83, 1-84, 1-85, 1-86, 1-88, 1-91, 1-92, 1-93,
27 1-94, 1-95, 1-97, 1-100, 1-101, 1-102, 1-104, 1-107, 2-1, 2-2, 2-3, 2-4, 2-5, 2-9, 2-10,
28 2-11, 2-12, 2-13, 2-14, 2-15, 2-16, 2-17, 2-18, 2-19, 2-20, 2-21, 2-22, 2-23, 2-24,
29 2-25, 2-26, 2-27, 2-28, 2-29, 2-30, 2-31, 2-32, 2-34, 2-35, 2-36, 2-37, 3-5, 3-8, 3-20,

1 3-23, 3-24, 3-44, 3-50, 3-54, 3-55, 3-56, 3-57, 3-63, 3-65, 3-69, and 3-70 of East
 2 Baton Rouge Parish; Precincts 1, 3, 4, 6, 7, 9, 10, 11, 12, 13, 13C, 14, 14A, 15, 15B,
 3 16, 17, 18, 19, 20, 21, 22, 23, 24, 28, 29, 31, and 32 of Iberville Parish; Precincts
 4 104, 108, 115, 116, 117, 150, 151, 152, 153, 154, 155, 156, 157A, 157B, 187, 188,
 5 201, 13-KB, 21-K, 22-K, 23-K, 24-K, 26-K, 29-K, 30-K, 31-K, and 33-K of
 6 Jefferson Parish; Precincts 1-1, 1-2, 1-3, 1-5, 1-6, 2-1, 2-2, 2-3, 2-4, 2-6, 3-1, 3-2,
 7 3-3, 4-4, 5-1, 5-3, 5-4, 5-5, 6-1, 6-2, 6-4, 6-6, 6-7, 6-8, 7-1, 7-2, 7-3, and 7-4 of
 8 St. Charles Parish; Precincts 1, 2, 3, 4, 5, 6, 7, 8, 9, 10, 11, 12, 13, 14, 15, and 16 of
 9 St. James Parish; Precincts 1-2, 1-3, 1-4, 1-5, 2-1, 2-2, 2-3, 2-4, 3-1, 3-2, 3-4, 4-1,
 10 4-2, 4-3, 4-13, 4-14, 5-1, 5-4, 5-7, 5-8, 6-1, 6-3, 6-4, 7-2, 7-3, 7-5, and 7-7 of St. John
 11 the Baptist Parish; and West Baton Rouge Parish.

12 (9) District 9 is composed of Ascension Parish; Precincts 1-9, 1-33, 1-34,
 13 1-35, 1-49, 1-52, 1-53, 1-55, 1-60, 1-71, 1-72, 1-74, 1-79, 1-80, 1-81, 1-87, 1-89,
 14 1-90, 1-98, 1-99, 1-103, 1-105, 3-3, 3-4, 3-7, 3-10, 3-11, 3-12, 3-13, 3-15, 3-16, 3-17,
 15 3-18, 3-19, 3-21, 3-22, 3-27, 3-28, 3-29, 3-31, 3-32, 3-33, 3-34, 3-35, 3-36, 3-38,
 16 3-39, 3-40, 3-41, 3-43, 3-45, 3-47, 3-48, 3-49, 3-51, 3-52, 3-53, 3-59, 3-60, 3-62,
 17 3-64, 3-66, 3-67, 3-68, 3-71, and 3-72 of East Baton Rouge Parish; Livingston
 18 Parish; and Precincts 33, 40, 40A, 41, 42, 42A, 43, 44, 45, 45A, 46, 47, 48, 49, 70,
 19 70A, 71, 72, 72A, 73, 74, 120, 120A, 120B, 121, 121A, 122, 122A, 122B, 123, 124,
 20 124A, 125, 127, 127A, 129, 129A, 133, 133A, 137, 137A, 137B, 137C, 137D, 139,
 21 141, 141A, 143, 143A, 145, 147, 149, 149A, and 151 of Tangipahoa Parish.

22 §101.3. Assignment of districts; vacancies, elections; redistricting

23 A. Each justice of the supreme court in office on the effective date of this
 24 Section shall be the justice for the district having the same designation as the district
 25 from which the justice was elected and shall complete the term for which he was
 26 elected.

27 B. The successor to the office of justice of the supreme court shall be elected
 28 from the district assigned to that office as provided by Subsection A of this Section.

29 The election shall be from the district composed as provided by R.S. 13:101.2.

1 Section 2. R.S. 13:101, 101.1, and 312.4 are hereby repealed.

2 Section 3.(A) The precincts referenced in this Act are those precincts identified as
3 Voting Districts (VTDs) in the 2020 Census Redistricting TIGER/Line Shapefiles for the
4 State of Louisiana as validated through the data verification program of the Louisiana House
5 of Representatives and the Louisiana Senate and available on the legislature's website on the
6 effective date of this Section.

7 (B) When a precinct referenced in this Act has been subdivided by action of the
8 parish governing authority on a nongeographic basis or subdivided by action of the parish
9 governing authority on a geographic basis in accordance with the provisions of R.S.
10 18:532.1, the enumeration in this Act of the general precinct designation shall include all
11 nongeographic and all geographic subdivisions thereof, however such subdivisions may be
12 designated.

13 (C) The territorial limits of the districts as provided in this Act shall continue in
14 effect until changed by law regardless of any subsequent change made to the precincts by
15 the parish governing authority.

16 Section 4.(A) The initial terms of office of supreme court justices to be elected from
17 Districts 8 and 9 as provided for in Section 1 of this Act shall begin on January 1, 2023.

18 (B) The initial term of office of the justice elected from District 8 shall end on
19 January 1, 2033, and the initial term of office of the justice elected from District 9 shall end
20 on January 1, 2025.

21 Section 5. This Act shall take effect and become operative if and when the proposed
22 amendment of Article V of the Constitution of Louisiana contained in the Act which
23 originated as House Bill No. 13 of this 2022 First Extraordinary Session of the Legislature
24 is adopted at a statewide election and becomes effective.

DIGEST

The digest printed below was prepared by House Legislative Services. It constitutes no part of the legislative instrument. The keyword, one-liner, abstract, and digest do not constitute part of the law or proof or indicia of legislative intent. [R.S. 1:13(B) and 24:177(E)]

HB 17 Original

2022 First Extraordinary Session

Wilford Carter

Abstract: Provides for the redistricting of the state's supreme court and provides for the composition of nine supreme court districts. Effective if and when the proposed amendment of Article V of the Constitution of Louisiana contained in the Act which originated as House Bill No. 13 of this 2022 1st E.S. is adopted at a statewide election and becomes effective.

Statistical summaries of proposed law including maps illustrating proposed district boundaries accompany this digest. (*Attached to the bill version on the internet.*)

Present constitution (Const. Art. V, §3) provides the supreme court must be composed of a chief justice and six associate justices.

Proposed constitution (House Bill No. 13) provides the supreme court must be composed of a chief justice and eight associate justices.

Present constitution (Const. Art. V, §4) provides the state must be divided into at least six supreme court districts, and at least one judge shall be elected from each. Further provides the districts and the number of judges assigned to each on the effective date of this constitution are retained, subject to change by law enacted by two-thirds of the elected members of each house of the legislature.

Proposed constitution (House Bill No. 13) provides that the state must be divided into at least nine supreme court districts and otherwise retains present constitution.

Proposed law redraws district boundaries for nine supreme court districts.

Proposed law provides the proposed districts are effective for all purposes if and when the proposed constitution is adopted at a statewide election and becomes effective.

Proposed law repeals present law that provides for an additional judgeship for the Court of Appeals for the Fourth Circuit who is assigned to the La. Supreme Court.

Proposed law specifies that precincts referenced in district descriptions are those precincts identified as Voting Districts (VTDs) in the 2020 Census Redistricting TIGER/Line Shapefiles for the state of La. as validated through the data verification program of the La. legislature. Also specifies that if any such precinct has been subdivided by action of the parish governing authority on a nongeographic basis or subdivided by action of the parish governing authority on a geographic basis in accordance with present law, the enumeration of the general precinct designation shall include all nongeographic and all geographic subdivisions thereof. Further provides that the territorial limits of the districts as enacted shall continue in effect until changed by law regardless of any subsequent change made to the precincts by the parish governing authority.

Population data in the summaries accompanying this digest are derived from 2020 Census Redistricting Data (Public Law 94-171), Summary File for Louisiana. Population data, statistical information, and maps are supplied for purposes of information and analysis and comprise no part of proposed law.

Proposed law provides that the initial terms of office of supreme court justices to be elected from Districts 8 and 9 shall begin on Jan. 1, 2023.

Proposed law provides that the initial term of office of the justice elected from District 8 shall end on Jan. 1, 2033, and the initial term of office of the justice elected from District 9 shall end on Jan. 1, 2025.

Effective if and when the proposed amendment of Article V of the Constitution of Louisiana contained in the Act which originated as House Bill No. 13 of this 2022 1st E.S. is adopted at a statewide election and becomes effective.

(Adds R.S. 13:101.2 and 101.3; Repeals R.S. 13:101, 101.1, and 312.4)

Plan Statistics

Plan: HLS 22 1ES-17 (Carter, Wilford) Original

<u>Districts:</u>	<u># of Members</u>	<u>Actual Population</u>	<u>Ideal Population</u>	<u>Absolute Deviation</u>	<u>Relative Deviation</u>
District 1	1	513,838	517,528	-3,690	-0.713%
District 2	1	540,885	517,528	23,357	4.513%
District 3	1	532,839	517,528	15,311	2.958%
District 4	1	462,059	517,528	-55,469	-10.718%
District 5	1	527,418	517,528	9,890	1.911%
District 6	1	559,257	517,528	41,729	8.063%
District 7	1	518,734	517,528	1,206	0.233%
District 8	1	481,847	517,528	-35,681	-6.895%
District 9	1	520,880	517,528	3,352	0.648%

Grand Total:	9	4,657,757	4,657,752
--------------	---	-----------	-----------

Ideal Population Per Member:	517528		
Number of Districts for Plan Type:	9		
Range of District Populations:	462,059	to	559,257
Absolute Mean Deviation:	10,800		
Absolute Range:	-55,469	to	41,729
Absolute Overall Range:	97,198		
Relative Mean Deviation:	4.07%		
Relative Range:	-10.72%	to	8.06%
Relative Overall Range:	18.78%		

<i>Ideal - Actual:</i>	-5
<i>Remainder:</i>	5
<i>Unassigned Population:</i>	0

Total Population

Plan: HLS 22 1ES-17 (Carter, Wilford) Original

	Total Population	Total White	Total Black	Total Asian	Total American Indian	Total Other	Total Hispanic	VAP Total	VAP White	VAP Black	VAP Asian	VAP American Indian	VAP Other	VAP Hispanic Total
District 1	513,838	360,731	68,880	18,080	9,766	56,381	68,703	401,164	291,087	48,821	13,329	7,268	40,659	48,644
	100.000%	70.203%	13.405%	3.519%	1.901%	10.973%	13.371%	100.000%	72.561%	12.170%	3.323%	1.812%	10.135%	12.126%
District 2	540,885	358,216	141,452	9,821	11,156	20,240	23,694	417,112	284,585	102,946	7,123	8,543	13,915	15,708
	100.000%	66.228%	26.152%	1.816%	2.063%	3.742%	4.381%	100.000%	68.227%	24.681%	1.708%	2.048%	3.336%	3.766%
District 3	532,839	352,303	137,839	10,885	7,538	24,274	28,747	403,430	276,356	96,969	7,889	5,552	16,664	19,235
	100.000%	66.118%	25.869%	2.043%	1.415%	4.556%	5.395%	100.000%	68.502%	24.036%	1.955%	1.376%	4.131%	4.768%
District 4	462,059	182,927	254,436	4,410	7,004	13,282	16,513	351,235	149,134	182,876	3,496	5,357	10,372	12,582
	100.000%	39.590%	55.066%	0.954%	1.516%	2.875%	3.574%	100.000%	42.460%	52.067%	0.995%	1.525%	2.953%	3.582%
District 5	527,418	352,275	138,824	6,146	12,481	17,692	22,559	402,699	276,592	99,632	4,500	9,192	12,783	15,941
	100.000%	66.792%	26.321%	1.165%	2.366%	3.354%	4.277%	100.000%	68.685%	24.741%	1.117%	2.283%	3.174%	3.959%
District 6	559,257	368,298	129,244	11,835	19,335	30,545	36,852	421,327	289,722	89,287	8,393	13,225	20,700	24,257
	100.000%	65.855%	23.110%	2.116%	3.457%	5.462%	6.589%	100.000%	68.764%	21.192%	1.992%	3.139%	4.913%	5.757%
District 7	518,734	164,990	286,073	21,829	6,260	39,582	53,435	409,151	143,100	215,022	17,604	4,953	28,472	38,368
	100.000%	31.806%	55.148%	4.208%	1.207%	7.631%	10.301%	100.000%	34.975%	52.553%	4.303%	1.211%	6.959%	9.377%
District 8	481,847	171,355	268,781	9,952	4,597	27,162	33,636	371,485	142,038	198,850	7,796	3,505	19,296	23,541
	100.000%	35.562%	55.781%	2.065%	0.954%	5.637%	6.981%	100.000%	38.235%	53.528%	2.099%	0.944%	5.194%	6.337%
District 9	520,880	346,557	117,590	14,330	8,923	33,480	38,410	392,945	271,897	81,366	10,286	6,645	22,751	25,386
	100.000%	66.533%	22.575%	2.751%	1.713%	6.428%	7.374%	100.000%	69.195%	20.707%	2.618%	1.691%	5.790%	6.460%
Grand Total	4,657,757	2,657,652	1,543,119	107,288	87,060	262,638	322,549	3,570,548	2,124,511	1,115,769	80,416	64,240	185,612	223,662
	100.000%	57.059%	33.130%	2.303%	1.869%	5.639%	6.925%	100.000%	59.501%	31.249%	2.252%	1.799%	5.198%	6.264%

Voter Registration

Plan: HLS 22 1ES-17 (Carter, Wilford) Original

	Reg Total Dec 2021	Reg White Dec 2021	Reg Black Dec 2021	Reg Other Dec 2021	Reg Dem Total Dec 2021	Reg Rep Total Dec 2021	Reg Other Total Dec 2021
District 1	333,648	268,482	33,397	31,769	84,565	148,554	100,529
	83.170%	80.469%	10.010%	9.522%	25.346%	44.524%	30.130%
District 2	334,017	243,586	77,530	12,901	102,253	147,933	83,831
	80.078%	72.926%	23.211%	3.862%	30.613%	44.289%	25.098%
District 3	323,815	235,655	73,876	14,284	110,781	123,347	89,687
	80.265%	72.775%	22.814%	4.411%	34.211%	38.092%	27.697%
District 4	288,188	124,574	154,335	9,279	149,988	70,254	67,946
	82.050%	43.227%	53.554%	3.220%	52.045%	24.378%	23.577%
District 5	326,754	232,126	82,729	11,899	124,878	123,202	78,674
	81.141%	71.040%	25.318%	3.642%	38.218%	37.705%	24.077%
District 6	343,053	254,014	71,219	17,820	120,187	127,822	95,044
	81.422%	74.045%	20.760%	5.195%	35.035%	37.260%	27.705%
District 7	329,731	116,215	179,910	33,606	203,815	37,910	88,006
	80.589%	35.245%	54.563%	10.192%	61.813%	11.497%	26.690%
District 8	300,284	114,539	171,081	14,664	171,561	56,928	71,795
	80.833%	38.144%	56.973%	4.883%	57.133%	18.958%	23.909%
District 9	314,856	238,798	58,671	17,387	92,976	132,830	89,050
	80.127%	75.844%	18.634%	5.522%	29.530%	42.188%	28.283%
Grand Total	2,894,346	1,827,989	902,748	163,609	1,161,004	968,780	764,562

Splits

Plan: HLS 22 1ES-17 (Carter, Wilford) Original

	Total Population	Total White	Total Black	Total Asian	Total American Indian	Total Other	VAP Total	VAP White	VAP Black	VAP Asian	VAP American Indian	VAP Other	Reg Total Dec 2021	Reg White Dec 2021	Reg Black Dec 2021	Reg Other Dec 2021
District 1																
*Jefferson	221,854	141,916	28,628	11,152	3,780	36,378	177,449	118,827	20,862	8,414	2,854	26,492	135,286	105,909	11,315	18,062
*Orleans	27,414	22,174	1,609	1,154	326	2,151	21,487	17,639	1,198	840	253	1,557	19,583	16,849	940	1,794
St. Tammany	264,570	196,641	38,643	5,774	5,660	17,852	202,228	154,621	26,761	4,075	4,161	12,610	178,779	145,724	21,142	11,913
*Tangipahoa	0	0	0	0	0	0	0	0	0	0	0	0	0	0	0	0
District 1	513,838	360,731	68,880	18,080	9,766	56,381	401,164	291,087	48,821	13,329	7,268	40,659	333,648	268,482	33,397	31,769
	100.000%	70.203%	13.405%	3.519%	1.901%	10.973%	100.000%	72.561%	12.170%	3.323%	1.812%	10.135%	83.170%	80.469%	10.010%	9.522%
District 2																
Bienville	12,981	6,950	5,600	57	207	167	10,073	5,486	4,284	30	162	111	8,847	4,843	3,917	87
*Bossier	125,814	80,608	30,357	3,448	3,236	8,165	93,880	62,555	21,036	2,413	2,445	5,431	68,708	50,653	14,081	3,974
*Caddo	110,683	76,731	24,149	3,145	2,520	4,138	86,909	62,411	17,330	2,313	1,912	2,943	73,024	55,444	13,558	4,022
Caldwell	9,645	7,646	1,632	51	150	166	7,478	5,969	1,224	46	116	123	6,031	5,124	818	89
Claiborne	14,170	7,263	6,360	88	185	274	11,507	6,258	4,824	55	140	230	8,598	4,632	3,820	146
*De Soto	1,694	1,344	192	2	94	62	1,288	1,026	141	1	76	44	1,048	897	118	33
*East Carroll	537	283	226	5	4	19	432	230	183	4	3	12	342	176	160	6
Franklin	19,774	12,492	6,802	70	205	205	15,028	9,901	4,779	44	153	151	13,159	9,015	4,034	110
Jackson	15,031	9,967	4,166	175	255	468	11,783	7,967	3,125	140	174	377	9,449	6,647	2,610	192
Lincoln	48,396	26,034	19,364	892	662	1,444	38,655	21,306	15,119	744	526	960	25,649	15,672	9,016	961
Morehouse	25,629	12,281	12,484	160	370	334	20,062	10,095	9,300	117	279	271	16,922	8,505	8,131	286
*Ouachita	88,706	71,528	10,792	1,431	2,063	2,892	67,100	55,207	7,266	1,003	1,609	2,015	57,244	50,061	5,196	1,987
Union	21,107	14,460	5,224	62	338	1,023	16,632	11,807	3,861	39	254	671	15,221	11,066	3,692	463
Webster	36,967	22,735	12,679	208	687	658	28,753	18,144	9,464	154	558	433	22,737	14,938	7,339	460
West Carroll	9,751	7,894	1,425	27	180	225	7,532	6,223	1,010	20	136	143	7,038	5,913	1,040	85
District 2	540,885	358,216	141,452	9,821	11,156	20,240	417,112	284,585	102,946	7,123	8,543	13,915	334,017	243,586	77,530	12,901
	100.000%	66.228%	26.152%	1.816%	2.063%	3.742%	100.000%	68.227%	24.681%	1.708%	2.048%	3.336%	80.078%	72.926%	23.211%	3.862%
District 3																
Acadia	57,576	44,480	10,864	238	573	1,421	42,943	34,071	7,383	173	400	916	37,678	30,555	6,407	716
Calcasieu	216,785	139,772	59,386	4,702	3,536	9,389	163,166	108,789	41,898	3,359	2,604	6,516	120,511	85,659	29,513	5,339
Cameron	5,617	5,232	125	30	75	155	4,358	4,100	79	23	47	109	4,789	4,610	88	91
Jefferson Davis	32,250	25,066	5,837	183	472	692	24,039	19,121	4,006	111	325	476	20,013	16,350	3,202	461
*Lafayette	220,611	137,753	61,627	5,732	2,882	12,617	168,924	110,275	43,603	4,223	2,176	8,647	140,824	98,481	34,666	7,677
District 3	532,839	352,303	137,839	10,885	7,538	24,274	403,430	276,356	96,969	7,889	5,552	16,664	323,815	235,655	73,876	14,284
	100.000%	66.118%	25.869%	2.043%	1.415%	4.556%	100.000%	68.502%	24.036%	1.955%	1.376%	4.131%	80.265%	72.775%	22.814%	4.411%
District 4																
*Avoyelles	13,163	7,812	4,793	88	308	162	10,098	6,279	3,403	72	210	134	8,219	5,144	2,812	263
*Bossier	2,932	444	2,194	44	37	213	1,996	376	1,404	35	32	149	1,035	208	757	70

Splits

Plan: HLS 22 1ES-17 (Carter, Wilford) Original

	Total Population	Total White	Total Black	Total Asian	Total American Indian	Total Other	VAP Total	VAP White	VAP Black	VAP Asian	VAP American Indian	VAP Other	Reg Total Dec 2021	Reg White Dec 2021	Reg Black Dec 2021	Reg Other Dec 2021
District 4																
*Caddo	127,165	26,726	95,155	889	1,320	3,075	95,498	22,648	69,029	695	1,046	2,080	78,272	17,669	57,691	2,912
Catahoula	8,906	5,776	2,395	46	119	570	6,951	4,557	1,736	33	87	538	6,467	4,639	1,770	58
*Concordia	17,885	9,509	7,714	122	212	328	13,596	7,508	5,607	100	153	228	11,442	6,708	4,536	198
*De Soto	25,118	13,940	9,781	115	646	636	19,152	10,883	7,284	85	481	419	17,665	10,433	6,692	540
*East Carroll	6,922	1,771	5,046	24	39	42	5,469	1,543	3,860	15	24	27	4,367	1,130	3,199	38
Grant	22,169	17,709	3,335	133	644	348	17,527	13,964	2,717	97	507	242	12,688	11,174	1,176	338
La Salle	14,791	11,348	1,422	283	372	1,366	11,563	8,636	1,065	264	271	1,327	8,792	7,978	637	177
Madison	10,017	3,475	6,363	20	59	100	7,435	2,906	4,391	9	48	81	7,278	2,494	4,674	110
Natchitoches	37,515	19,361	15,725	255	861	1,313	29,349	16,010	11,415	198	683	1,043	23,107	12,850	9,224	1,033
*Ouachita	71,662	17,017	50,425	1,357	598	2,265	53,100	14,767	35,024	1,115	450	1,744	42,508	10,454	30,462	1,592
*Rapides	56,506	20,513	32,944	684	970	1,395	42,986	17,086	23,536	524	755	1,085	34,020	13,760	18,823	1,437
Red River	7,620	4,195	3,106	25	171	123	5,714	3,338	2,164	3	116	93	5,631	3,130	2,418	83
Richland	20,043	11,785	7,603	83	258	314	15,383	9,338	5,546	66	203	230	13,662	8,470	4,961	231
*Sabine	1,743	1,208	396	9	101	29	1,277	917	272	3	61	24	1,174	842	294	38
Tensas	4,147	1,744	2,312	23	26	42	3,235	1,446	1,728	12	23	26	3,455	1,503	1,917	35
Winn	13,755	8,594	3,727	210	263	961	10,906	6,932	2,695	170	207	902	8,406	5,988	2,292	126
District 4	462,059	182,927	254,436	4,410	7,004	13,282	351,235	149,134	182,876	3,496	5,357	10,372	288,188	124,574	154,335	9,279
	100.000%	39.590%	55.066%	0.954%	1.516%	2.875%	100.000%	42.460%	52.067%	0.995%	1.525%	2.953%	82.050%	43.227%	53.554%	3.220%
District 5																
Allen	22,750	16,327	4,490	246	947	740	17,510	12,751	3,275	182	646	656	12,201	9,478	2,217	506
*Avoyelles	26,530	17,813	6,885	346	459	1,027	20,480	13,990	4,908	307	360	915	15,207	11,390	3,482	335
Beauregard	36,549	29,529	4,649	402	1,052	917	27,489	22,304	3,495	269	773	648	22,294	18,771	2,369	1,154
*Concordia	802	766	11	0	21	4	621	600	6	0	14	1	522	514	4	4
*East Baton Rouge	34,390	26,981	4,977	367	658	1,407	26,030	20,932	3,407	242	512	937	23,840	20,124	3,041	675
East Feliciana	19,539	11,516	7,341	91	262	329	16,183	9,740	5,918	61	198	266	13,600	7,959	5,186	455
Evangeline	32,350	21,354	9,235	241	280	1,240	24,408	16,460	6,483	187	217	1,061	20,553	14,566	5,643	344
Pointe Coupee	20,758	12,395	7,504	107	159	593	16,250	10,108	5,502	91	119	430	14,675	9,320	5,121	234
*Rapides	73,517	56,997	9,648	1,744	2,132	2,996	55,806	44,287	6,669	1,262	1,579	2,009	46,156	39,072	4,952	2,132
*Sabine	20,412	13,828	3,465	85	2,622	412	15,787	11,137	2,383	63	1,909	295	13,373	10,181	1,890	1,302
St. Helena	10,920	4,527	6,031	39	134	189	8,463	3,805	4,371	28	109	150	8,321	3,628	4,565	128
St. Landry	82,540	43,611	35,836	499	636	1,958	61,811	34,209	25,497	353	451	1,301	54,482	30,093	23,005	1,384
*Tangipahoa	36,838	20,718	13,967	232	558	1,363	27,866	16,478	9,902	171	410	905	22,476	13,921	7,961	594
Vernon	48,750	35,087	7,611	1,442	1,600	3,010	36,261	26,765	5,133	1,074	1,160	2,129	24,060	19,182	3,011	1,867
Washington	45,463	29,943	13,434	216	736	1,134	34,951	23,743	9,732	154	561	761	27,587	18,835	8,102	650
West Feliciana	15,310	10,883	3,740	89	225	373	12,783	9,283	2,951	56	174	319	7,407	5,092	2,180	135

Splits

Plan: HLS 22 1ES-17 (Carter, Wilford) Original

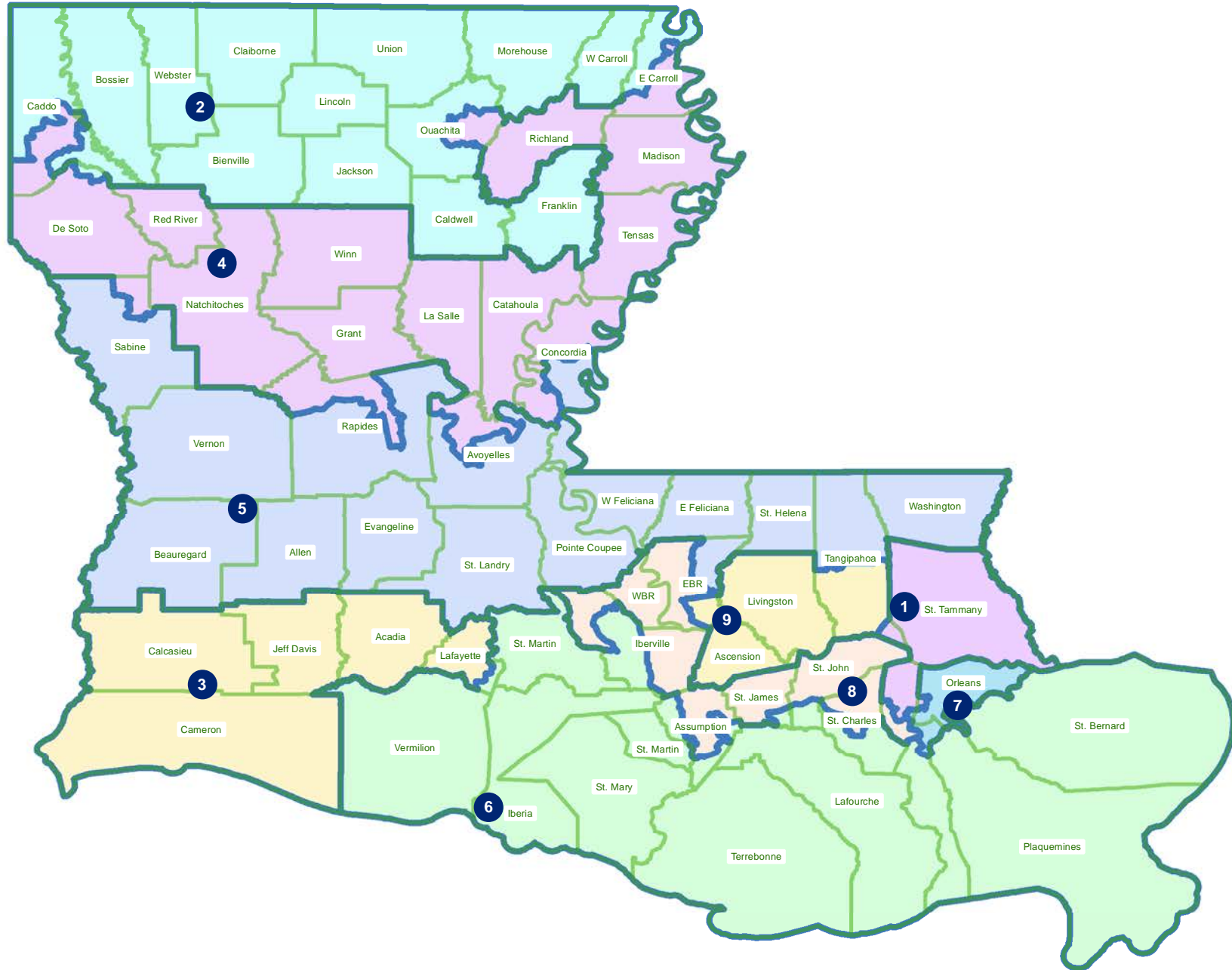
	Total Population	Total White	Total Black	Total Asian	Total American Indian	Total Other	VAP Total	VAP White	VAP Black	VAP Asian	VAP American Indian	VAP Other	Reg Total Dec 2021	Reg White Dec 2021	Reg Black Dec 2021	Reg Other Dec 2021
District 5	527,418	352,275	138,824	6,146	12,481	17,692	402,699	276,592	99,632	4,500	9,192	12,783	326,754	232,126	82,729	11,899
	100.000%	66.792%	26.321%	1.165%	2.366%	3.354%	100.000%	68.685%	24.741%	1.117%	2.283%	3.174%	81.141%	71.040%	25.318%	3.642%
District 6																
*Assumption	10,120	8,794	627	53	172	474	8,013	7,117	420	37	128	311	6,611	6,158	329	124
Iberia	69,929	39,206	24,556	2,123	794	3,250	52,791	31,295	17,069	1,562	581	2,284	44,526	28,287	14,352	1,887
*Iberville	3,203	3,028	59	5	54	57	2,612	2,480	36	4	46	46	2,306	2,240	21	45
*Jefferson	10,523	7,659	1,258	481	415	710	8,053	6,009	882	359	299	504	7,145	5,807	786	552
*Lafayette	21,142	15,610	3,509	722	328	973	14,951	11,333	2,314	441	211	652	12,669	10,164	1,815	690
Lafourche	97,557	71,710	15,855	1,025	4,224	4,743	74,619	56,838	11,077	738	2,777	3,189	58,278	48,467	7,164	2,647
Plaquemines	23,515	14,287	5,428	1,317	697	1,786	17,334	10,856	3,857	925	500	1,196	13,908	9,513	3,134	1,261
St. Bernard	43,764	24,497	12,309	1,381	947	4,630	31,775	18,992	7,944	982	688	3,169	25,653	18,233	5,497	1,923
*St. Charles	7,764	6,538	623	97	204	302	5,826	5,017	388	62	147	212	5,448	4,877	365	206
*St. James	3,403	2,162	1,132	9	23	77	2,725	1,762	888	7	17	51	2,570	1,604	924	42
*St. John the Baptist	225	188	19	0	8	10	186	157	16	0	7	6	120	118	0	2
St. Martin	51,767	33,259	15,921	597	539	1,451	39,404	26,278	11,293	407	413	1,013	35,120	23,934	10,381	805
St. Mary	49,406	26,949	15,991	835	1,670	3,961	37,521	21,594	11,520	593	1,173	2,641	30,210	18,712	9,891	1,607
Terrebonne	109,580	69,934	23,147	1,743	8,637	6,119	82,505	55,631	15,796	1,239	5,750	4,089	61,720	45,395	11,566	4,759
Vermilion	57,359	44,477	8,810	1,447	623	2,002	43,012	34,363	5,787	1,037	488	1,337	36,769	30,505	4,994	1,270
District 6	559,257	368,298	129,244	11,835	19,335	30,545	421,327	289,722	89,287	8,393	13,225	20,700	343,053	254,014	71,219	17,820
	100.000%	65.855%	23.110%	2.116%	3.457%	5.462%	100.000%	68.764%	21.192%	1.992%	3.139%	4.913%	81.422%	74.045%	20.760%	5.195%
District 7																
*Jefferson	162,151	60,702	68,713	10,127	2,920	19,689	124,442	50,487	50,152	7,924	2,258	13,621	93,070	41,078	39,325	12,667
*Orleans	356,583	104,288	217,360	11,702	3,340	19,893	284,709	92,613	164,870	9,680	2,695	14,851	236,661	75,137	140,585	20,939
District 7	518,734	164,990	286,073	21,829	6,260	39,582	409,151	143,100	215,022	17,604	4,953	28,472	329,731	116,215	179,910	33,606
	100.000%	31.806%	55.148%	4.208%	1.207%	7.631%	100.000%	34.975%	52.553%	4.303%	1.211%	6.959%	80.589%	35.245%	54.563%	10.192%
District 8																
*Assumption	10,919	4,928	5,593	43	86	269	8,603	4,028	4,287	20	69	199	7,828	3,542	4,181	105
*East Baton Rouge	266,612	81,145	163,617	6,967	2,157	12,726	207,360	69,347	121,607	5,613	1,708	9,085	158,833	51,163	99,766	7,904
*Iberville	27,038	11,805	13,671	197	220	1,145	21,474	9,982	10,196	145	175	976	18,156	7,892	9,876	388
*Jefferson	46,253	10,658	27,618	1,264	571	6,142	34,710	8,812	20,279	995	424	4,200	27,600	6,822	18,150	2,628
*St. Charles	44,785	27,012	13,305	740	721	3,007	33,715	21,137	9,502	467	520	2,089	29,537	19,432	8,432	1,673
*St. James	16,789	7,811	8,630	51	59	238	12,780	6,121	6,409	24	47	179	12,396	5,650	6,577	169
*St. John the Baptist	42,252	13,689	25,177	403	457	2,526	32,317	11,465	18,421	323	343	1,765	28,793	10,101	17,234	1,458
West Baton Rouge	27,199	14,307	11,170	287	326	1,109	20,526	11,146	8,149	209	219	803	17,141	9,937	6,865	339

Splits

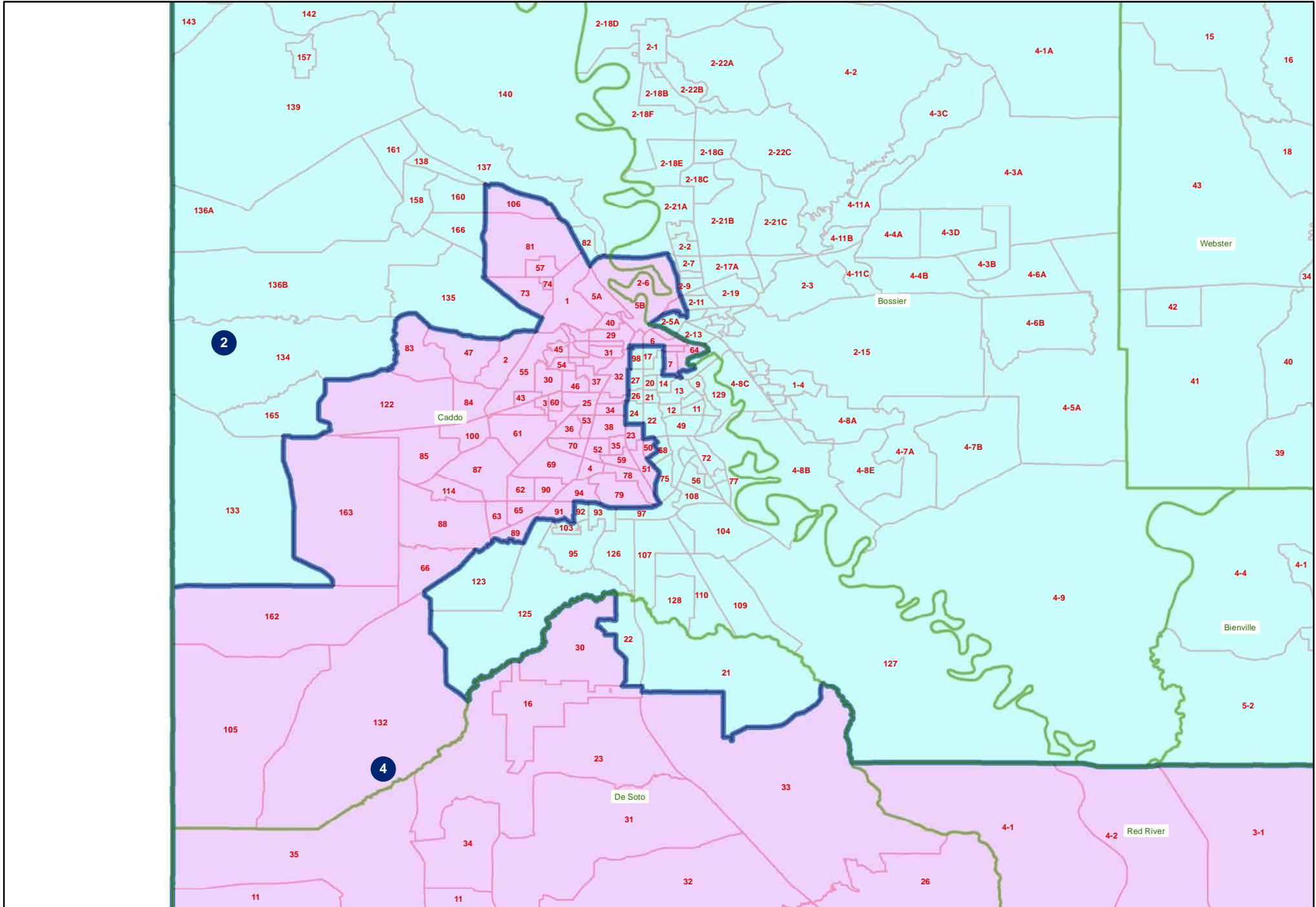
Plan: HLS 22 1ES-17 (Carter, Wilford) Original

	Total Population	Total White	Total Black	Total Asian	Total American Indian	Total Other	VAP Total	VAP White	VAP Black	VAP Asian	VAP American Indian	VAP Other	Reg Total Dec 2021	Reg White Dec 2021	Reg Black Dec 2021	Reg Other Dec 2021
District 8	481,847	171,355	268,781	9,952	4,597	27,162	371,485	142,038	198,850	7,796	3,505	19,296	300,284	114,539	171,081	14,664
	100.000%	35.562%	55.781%	2.065%	0.954%	5.637%	100.000%	38.235%	53.528%	2.099%	0.944%	5.194%	80.833%	38.144%	56.973%	4.883%
District 9																
Ascension	126,500	81,141	32,216	2,300	2,004	8,839	91,957	61,136	22,139	1,514	1,390	5,778	79,917	56,800	18,814	4,303
*East Baton Rouge	155,779	87,943	44,804	9,091	1,912	12,029	122,222	73,602	31,776	6,744	1,527	8,573	96,591	66,945	21,868	7,778
Livingston	142,282	116,855	12,658	1,697	3,111	7,961	105,141	88,432	8,136	1,099	2,311	5,163	84,568	76,062	5,425	3,081
*Tangipahoa	96,319	60,618	27,912	1,242	1,896	4,651	73,625	48,727	19,315	929	1,417	3,237	53,780	38,991	12,564	2,225
District 9	520,880	346,557	117,590	14,330	8,923	33,480	392,945	271,897	81,366	10,286	6,645	22,751	314,856	238,798	58,671	17,387
	100.000%	66.533%	22.575%	2.751%	1.713%	6.428%	100.000%	69.195%	20.707%	2.618%	1.691%	5.790%	80.127%	75.844%	18.634%	5.522%

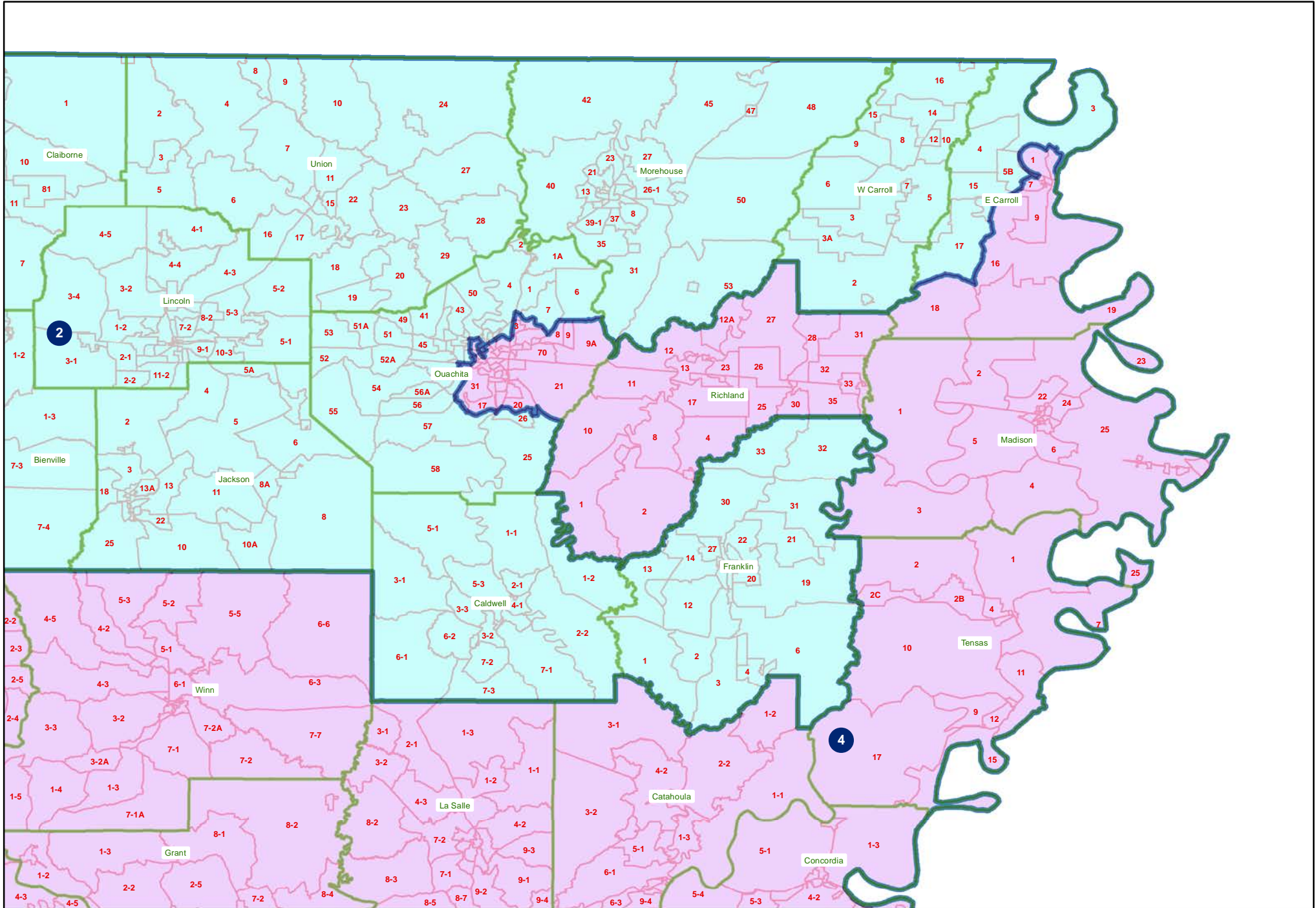
HLS 22 1ES-17 (Carter, Wilford) Original
Statewide



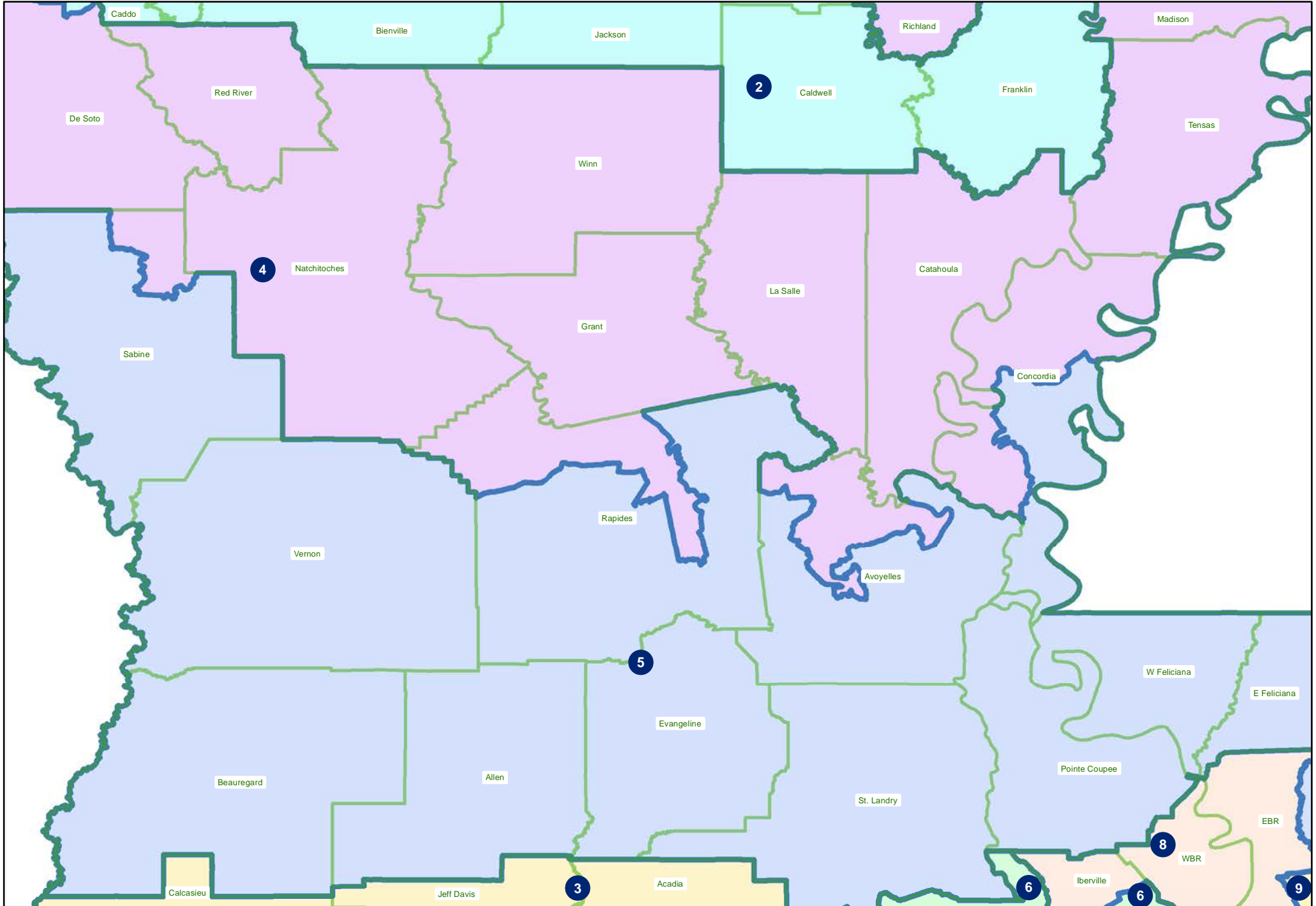
HLS 22 1ES-17 (Carter, Wilford) Original Shreveport Area



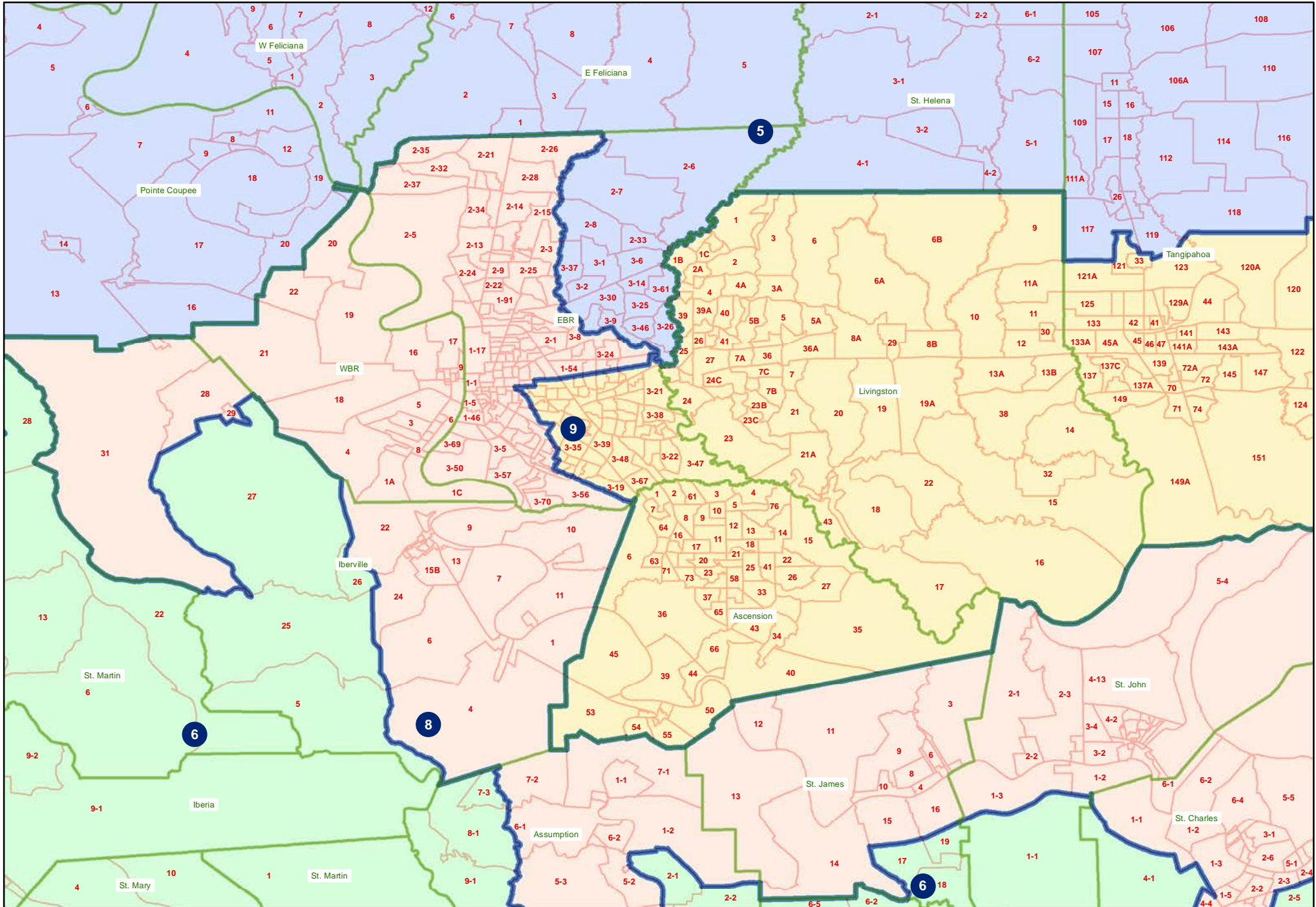
HLS 22 1ES-17 (Carter, Wilford) Original
Northeast



HLS 22 1ES-17 (Carter, Wilford) Original Central



HLS 22 1ES-17 (Carter, Wilford) Original Capital Region



HLS 22 1ES-17 (Carter, Wilford) Original New Orleans Area

